



How to succeed with time registration and workforce scheduling in the cloud

Learn why a specialised Workforce Management solution is a great choice when you must extend your cloud-based ERP and HR systems for optimal support of all business processes.



- 3** The future of IT is in the cloud
- 4** Integrations are the way forward
- 5** A reliable extension with quality stamps
- 6** Easy to get started with ProMark 365 Cloud
- 7** Cloud solutions for every need
- 9** 5 factors making the ProMark platform unique
- 10** ProMark is trusted by leading global companies
- 11** Ready to take the next step on your modernisation journey?

The future of IT is in the cloud

The future of IT is in the cloud – and the cloud market is gaining momentum!

Today, the major system providers offer a range of cloud-based HR and ERP systems – while at the same time, phasing out some of their older, on-premise solutions. This means that in the coming years, many companies must decide when they want to move into the cloud – and how.

Cloud computing changes the way companies manage their IT and offers a completely different flexibility when it comes to functionality, integration, scalability, security and economy.

One of the big changes is that the new cloud solutions are standard solutions that cannot be adjusted to the individual company. This means that additional functionality must be added via integration of specialised solutions from 3rd party vendors.

In this way, you can design your own specific business solution in a flexible way and with the latest technology – without time-consuming development and maintenance.

Learn more about why a specialised Workforce Management solution is a great extension of your cloud-based ERP and HR systems for optimal support of time, absence and activity registration as well as workforce scheduling.

Happy reading!



Integrations are the way forward

You probably have a cloud strategy for your company's ERP and HR systems – and might even have moved up there already? But have you also considered a solution for Workforce Management?

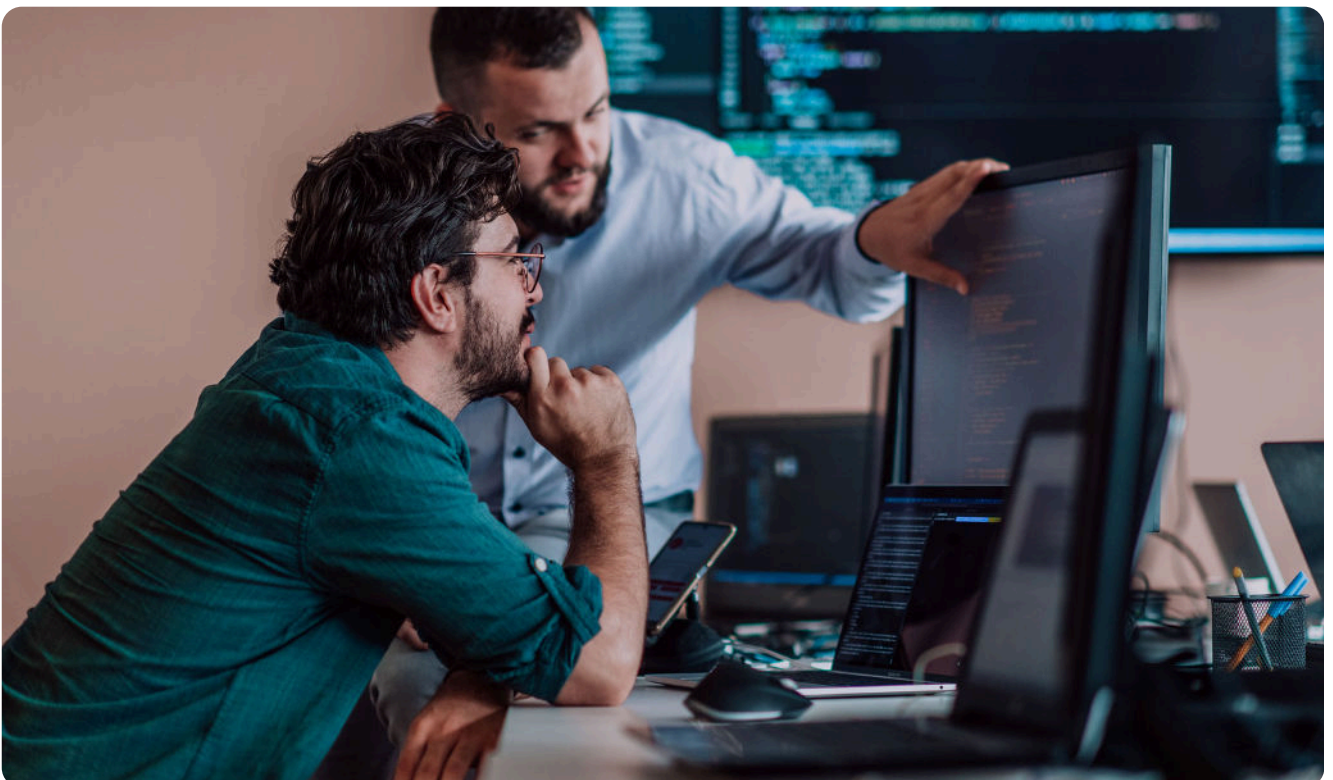
The large system platforms from Microsoft and SAP have a wide range of functionality that support a number of processes in the company. But when it comes to administration of employee working time and absence in compliance with rules and agreements, shift scheduling and task management, you will probably need to add a specialised solution to get optimal support of all processes.

ProMark is a best-of-breed Workforce Management solution that support time & attendance registration, absence management, workforce scheduling as well as job and project registration. Intuitive user interfaces on e.g. mobile app and web portal facilitate simple registration and validation of data.

Integration to the company's payroll system is always part of the setup, but often ProMark is also integrated with other business systems such as HR and ERP for maximum efficiency.

By adding ProMark to your system landscape, you can enrich the other systems with valuable and current information on e.g. attendance, absence, how many hours that are spent on the individual tasks and other production-related data – in real time.

This provides a complete and validated payroll basis, helps to ensure optimal usage of the company's employees and delivers relevant insights into ongoing activities for continuous follow-up and optimisation.



A reliable extension with quality stamps

ProMark offers different integration options to a wide range of well-known systems – from the very simple to the most advanced ones according to the latest standards. And several of ProMark’s integrations are certified by SAP and Microsoft.

The certifications ensure that ProMark is a reliable extension option that adds value to the existing IT landscape in the company.

You get a complete standard solution with built-in integration, supporting configuration instead of user specific coding – both when it comes to the business system and ProMark. This simplifies the upgrades, so you get full value of the new opportunities that are continuously being rolled out in both solutions.

The certified integrations also simplify the implementation through available documentation and templates for setup. This makes it easier to get started. And we are continuously maintaining and updating the solution according to the new cloud versions.

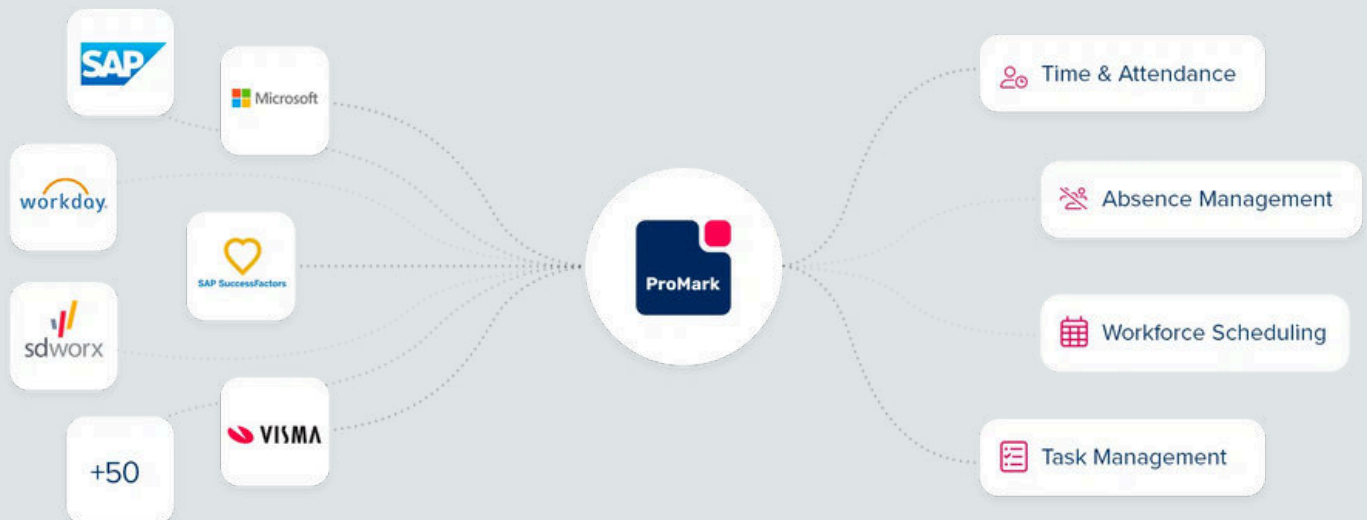
All this makes ProMark a future-proof and safe choice, regardless of your platform strategy.



SAP® Certified
Integration with Cloud Solutions

SAP® Certified
Integration with SAP S/4HANA®

SAP® Certified
Integration with SAP Applications



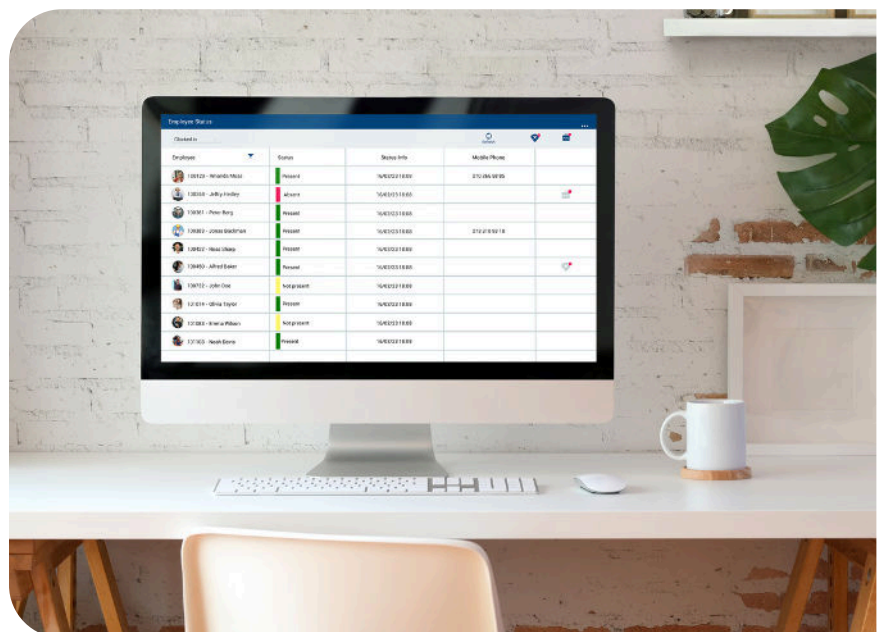
Easy to get started with ProMark 365 Cloud

ProMark 365 Cloud is a cloud solution that makes it easy for companies to get started.

ProMark 365 Cloud is hosted on the Microsoft Azure platform. Here you share a standardised infrastructure and ProMark installation with other organisations, and we control maintenance and upgrades via periodic system updates. You can also choose a platform solely dedicated to you where upgrades are agreed with you as needed. No matter which option you choose each organisation has its own database – completely separated from the others.





ProMark is available in 4 different Software as a Service editions, allowing companies to select the package that best matches their need for functionality.

The company pays a fee per employee per month based on the selected package and the number of employees to use it. And the package is, of course, scalable in relation to number of employees.



Cloud solutions for every need

The 4 available cloud solutions are:

	 Essentials <small>The simple choice for basic clock-in/clock-out and absence registration.</small>	 Professional <small>Add project registration and workforce scheduling features.</small>	 Enterprise <small>The complete solution providing all available ProMark functionality.</small>	 Individual <small>Select functionality to build tailor-made support for your company's needs.</small>	
Time & Attendance	Deviations	✓	✓	✓	✓
	Attendance	✓	✓	✓	✓
	Notifications	✓	✓	✓	✓
	Mileage and per diem	-	✓	✓	(S)
Absence Management	Holiday management	(✓)*	✓	✓	(S)
	Sickness absence management	(✓)*	✓	✓	(S)
Scheduling	Staff rostering & self-service	-	✓	✓	(S)
	Shift scheduling	-	-	✓	(S)
	Labour forecasting	-	-	✓	(S)
	Unscheduled work	-	-	✓	(S)
	Automated scheduling	-	-	✓	(S)
Task Management	Standard project registration	-	✓	✓	(S)
	Advanced project registration	-	-	✓	(S)
	Job registration	-	-	✓	(S)
Analytics	Reporting	✓	✓	✓	✓
	Business intelligence	-	(✓)*	✓	(S)
User Experience	Web portal	✓	✓	✓	✓
	Mobile app	✓	✓	✓	✓
	Terminal	-	✓	✓	(S)
	Windows terminal	-	✓	✓	(S)

*add-on

1 Essentials

Essentials is the simple choice for basic clock-in, clock-out and absence registration where the employees register via mobile app and web portal.

Absence and overtime can be sent to the manager or administrator for approval and the system sends out notifications to ensure that registrations and approvals are made before the payroll is due to be prepared. In addition, management has access to standard reports for actual overview for follow-up purposes.

Essentials includes standard integration to HR and payroll systems for simple transfer of employee data.

Functionality for advanced holiday and sickness absence management is offered as add-on.

ProMark 365 Cloud

2 Professional

Professional is the fully digitalised time and attendance solution which in an advanced manner can control all working time rules and agreements and prepares the payroll basis via intelligent dialogues with the employees.

In addition, this package also includes functionality for mileage registration, advanced holiday and sickness absence management, staff rostering and standard registration of project time as well as the option to register via terminals.

Professional offers modern API integration to e.g. HR and ERP systems.

Business intelligence functionality is offered as add-on.

3 Enterprise

Enterprise is the complete Workforce Management solution that includes all available functionality in ProMark. This means full digitalisation of your work processes while also getting the necessary insights to follow up and optimise – and thus achieve savings.

In addition to time and absence registration and workforce scheduling, this edition also includes job registration and advanced project registration. It gives the opportunity to integrate to all relevant business systems, including data warehouse for advanced business intelligence.

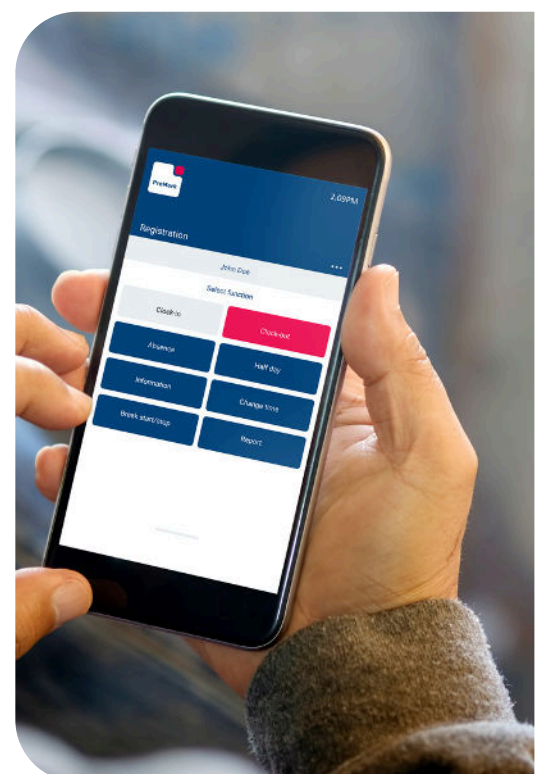
The Enterprise edition allows you to introduce digitalisation and automation broadly in the company at a pace that suits you.

4 Individual

Individual is the tailored solution where you are free to select the ProMark functionality which best support your needs and processes. The solution is hosted on a private infrastructure and can thus be adapted and scaled according to your needs.

This edition allows integration to all relevant business systems, including data warehouse for advanced business intelligence.

Individual is for customers who want a high level of security in the operation of their ProMark solution and simultaneously be able to adapt the solution to their specific needs.



5 factors making the ProMark platform unique

ProMark 365 Cloud is for companies who want a scalable solution with high security which requires minimum involvement from your side.

Digitalising complexity across countries



Digitalising the most complex labour legislation, union agreements and company policies through flexible rule configuration

What it means?

- Simplify and make sure that companies are always compliant
- Improve efficiency and reduce cost through less manual work
- Flexible and easy setup through configuration, not coding

Empower employee engagement



Intelligent exception-driven role-based user experience with self-service options

What it means?

- A system where no processes can be broken
- Availability through web portal, mobile app and terminals
- Supports best-in-class employee experience

Business insights and profitability

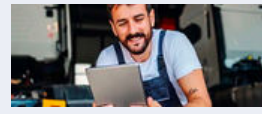


Combining T&A and Task Management enabling productivity, insights and profitability gains

What it means?

- Secure that tasks are managed and completed by the right employees
- Support every employee in their daily task completion
- Capture real-time data and insights from production

Optimal planning and profitability



Combining T&A and advanced Scheduling with AI functionality enabling optimal workforce planning and work-life balance

What it means?

- Make it easy for managers to create and manage the right schedules and shift patterns
- Provide options for employees to manage their availability and plan time
- Leverage labour forecasting data to optimise schedules

Seamless and certified API integrations



Modern and secure standardised API integrations honouring customers' IT strategies and architecture

What it means?

- A standardised, secure and proven approach that unlocks business objectives in an efficient and low risk manner
- Future-proof solution supporting customers' digital transformation and eliminating manual tasks



ProMark is trusted by leading global companies

Hundreds of leading industry players already trust ProMark to maximise productivity and boost the employee experience.



For a production company like ours, it is important to always be able to adapt our production to the demand. That requires a flexible IT solution which is what we have with staff rostering and the mobile app.

Jan Andreasen, IT Project Manager, Hartmann Packaging



Hartmann Packaging wanted a digital scheduling solution to optimise the planning task, comply with rest periods and handle deviations more effectively.

With ProMark, they have the necessary overview, allowing them to be more agile to keep up production at all times, while saving hours on scheduling – and rescheduling – every week.

With ProMark, Aarsleff's hourly-paid workers can register all relevant information, including time spent on projects, breaks, overtime, absence, supplements and bonus via a unique, user-friendly interface.

This allows them to implement projects both faster and more cost-effectively, while ensuring correct payroll in time.



Aarsleff was looking for a professional vendor to support Workforce Management. It is a strategic project and in ProMark we found more than a vendor – this is a mutual strategic partnership.

Steen Guldborg, IT Manager, Per Aarsleff A/S



It is easy to keep track of available staff numbers, so it is possible to plan resources effectively. This allows overtime to be shared among more people and avoid infringing contracts.

Patrik Hjelm, Staff Manager, Holmen Paper



With ProMark, Holmen has replaced a manual, time-consuming planning process with a simple, consistent planning solution for all personnel, reducing the cost of overtime and absence rates, while ensuring compliance with working time regulations.

Ready to take the next step on your modernisation journey?

With a broad spectrum of functionality, services and integration options, ProMark is a future-proof solution with low total costs and thus an attractive and safe choice compared to global Workforce Management solutions.

We will be happy to assist you in setting up the business case where the specific value of implementing ProMark can be further qualified.

Experience from our customers shows significant reduction in administrative costs, reduction of sick leave and overtime, increased productivity and, not least, correct salaries.

Are you ready to continue your cloud journey?

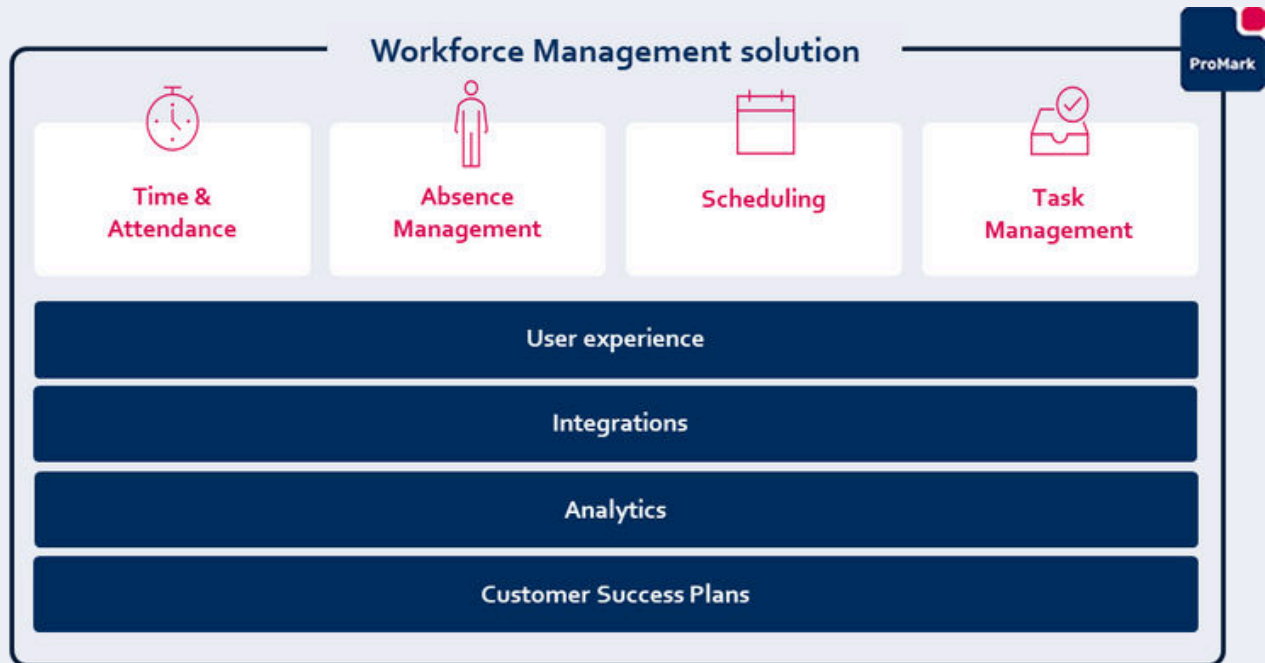
 **Contact us today at +45 46 90 00 00 or info@promark365.com.**



Powered by



ProMark Workforce Management



2025-01

ProMark

ProMark is a leading vendor of SaaS Workforce Management solutions. Every day, we strive to support workforces achieve a smarter workday.

With advanced functionality for time & attendance reporting, absence and task management as well as scheduling, our all-in-one solution helps some of the largest and most well-known brands in the world maximise employee engagement, productivity, and profitability.

ProMark · www.promark365.com · info@promark365.com

